

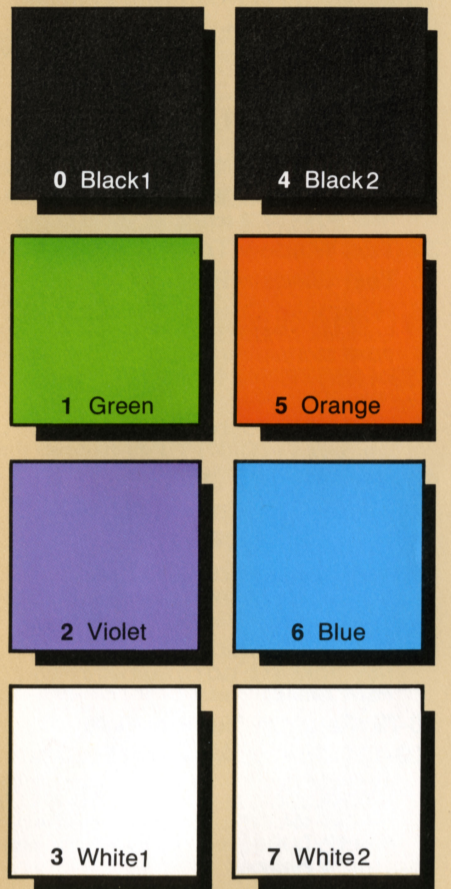
APPLE® COLORS

DOUBLE HI-RES* & LO-RES COLORS



(Colors may vary. Try adjusting your monitor.)

HI-RES COLORS



(Colors may vary. Try adjusting your monitor.)



To get on a really good mailing list, write:
BEAGLE BROS INC.
 3990 Old Town Avenue, Suite 102C
 San Diego, California 92110

COPYRIGHT © 1984, BERT KERSEY, BEAGLE BROS INC.

*16-color, 560x192 Double Hi-Res graphics may be created on 128K Apples with Mark Simonsen's **BEAGLE GRAPHICS™**, now available at your local Apple software store.

“APPLE” is a Registered Trade Mark of Apple Computer, Inc.

ASCII VALUES

Low	High	Low	High	Low	High	Low	High	Mouse Characters
0 \$00	ctrl-@ 128 \$80	32 \$20	sp 160 \$A0	64 \$40	@ 192 \$C0	96 \$60	' 224 \$E0	@= Ⓜ
1 \$01	ctrl-A 129 \$81	33 \$21	! 161 \$A1	65 \$41	A 193 \$C1	97 \$61	a 225 \$E1	A= Ⓜ
2 \$02	ctrl-B 130 \$82	34 \$22	" 162 \$A2	66 \$42	B 194 \$C2	98 \$62	b 226 \$E2	B= Ⓜ
3 \$03	ctrl-C 131 \$83	35 \$23	# 163 \$A3	67 \$43	C 195 \$C3	99 \$63	c 227 \$E3	C= Ⓜ
4 \$04	ctrl-D 132 \$84	36 \$24	\$ 164 \$A4	68 \$44	D 196 \$C4	100 \$64	d 228 \$E4	D= Ⓜ
5 \$05	ctrl-E 133 \$85	37 \$25	% 165 \$A5	69 \$45	E 197 \$C5	101 \$65	e 229 \$E5	E= Ⓜ
6 \$06	ctrl-F 134 \$86	38 \$26	& 166 \$A6	70 \$46	F 198 \$C6	102 \$66	f 230 \$E6	F= Ⓜ
(Bell) 7 \$07	ctrl-G 135 \$87	39 \$27	' 167 \$A7	71 \$47	G 199 \$C7	103 \$67	g 231 \$E7	G= Ⓜ
(←) 8 \$08	ctrl-H 136 \$88	40 \$28	(168 \$A8	72 \$48	H 200 \$C8	104 \$68	h 232 \$E8	H= Ⓜ
(Tab) 9 \$09	ctrl-I 137 \$89	41 \$29) 169 \$A9	73 \$49	I 201 \$C9	105 \$69	i 233 \$E9	I= Ⓜ
(↓) 10 \$0A	ctrl-J 138 \$8A	42 \$2A	* 170 \$AA	74 \$4A	J 202 \$CA	106 \$6A	j 234 \$EA	J= Ⓜ
(↑) 11 \$0B	ctrl-K 139 \$8B	43 \$2B	+ 171 \$AB	75 \$4B	K 203 \$CB	107 \$6B	k 235 \$EB	K= Ⓜ
12 \$0C	ctrl-L 140 \$8C	44 \$2C	, 172 \$AC	76 \$4C	L 204 \$CC	108 \$6C	l 236 \$EC	L= Ⓜ
(Return) 13 \$0D	ctrl-M 141 \$8D	45 \$2D	- 173 \$AD	77 \$4D	M 205 \$CD	109 \$6D	m 237 \$ED	M= Ⓜ
14 \$0E	ctrl-N 142 \$8E	46 \$2E	. 174 \$AE	78 \$4E	N 206 \$CE	110 \$6E	n 238 \$EE	N= Ⓜ
15 \$0F	ctrl-O 143 \$8F	47 \$2F	/ 175 \$AF	79 \$4F	O 207 \$CF	111 \$6F	o 239 \$EF	O= Ⓜ
16 \$10	ctrl-P 144 \$90	48 \$30	0 176 \$B0	80 \$50	P 208 \$D0	112 \$70	p 240 \$F0	P= Ⓜ
17 \$11	ctrl-Q 145 \$91	49 \$31	1 177 \$B1	81 \$51	Q 209 \$D1	113 \$71	q 241 \$F1	Q= Ⓜ
18 \$12	ctrl-R 146 \$92	50 \$32	2 178 \$B2	82 \$52	R 210 \$D2	114 \$72	r 242 \$F2	R= Ⓜ
19 \$13	ctrl-S 147 \$93	51 \$33	3 179 \$B3	83 \$53	S 211 \$D3	115 \$73	s 243 \$F3	S= Ⓜ
20 \$14	ctrl-T 148 \$94	52 \$34	4 180 \$B4	84 \$54	T 212 \$D4	116 \$74	t 244 \$F4	T= Ⓜ
(→) 21 \$15	ctrl-U 149 \$95	53 \$35	5 181 \$B5	85 \$55	U 213 \$D5	117 \$75	u 245 \$F5	U= Ⓜ
22 \$16	ctrl-V 150 \$96	54 \$36	6 182 \$B6	86 \$56	V 214 \$D6	118 \$76	v 246 \$F6	V= Ⓜ
23 \$17	ctrl-W 151 \$97	55 \$37	7 183 \$B7	87 \$57	W 215 \$D7	119 \$77	w 247 \$F7	W= Ⓜ
24 \$18	ctrl-X 152 \$98	56 \$38	8 184 \$B8	88 \$58	X 216 \$D8	120 \$78	x 248 \$F8	X= Ⓜ
25 \$19	ctrl-Y 153 \$99	57 \$39	9 185 \$B9	89 \$59	Y 217 \$D9	121 \$79	y 249 \$F9	Y= Ⓜ
26 \$1A	ctrl-Z 154 \$9A	58 \$3A	: 186 \$BA	90 \$5A	Z 218 \$DA	122 \$7A	z 250 \$FA	Z= Ⓜ
(Esc) 27 \$1B	ctrl-[155 \$9B	59 \$3B	; 187 \$BB	91 \$5B	[219 \$DB	123 \$7B	{ 251 \$FB	[= Ⓜ
28 \$1C	ctrl-\ 156 \$9C	60 \$3C	< 188 \$BC	92 \$5C	\ 220 \$DC	124 \$7C	252 \$FC	\= Ⓜ
29 \$1D	ctrl-] 157 \$9D	61 \$3D	= 189 \$BD	93 \$5D] 221 \$DD	125 \$7D	} 253 \$FD] = Ⓜ
30 \$1E	ctrl-^ 158 \$9E	62 \$3E	> 190 \$BE	94 \$5E	^ 222 \$DE	126 \$7E	~ 254 \$FE	^ = Ⓜ
31 \$1F	ctrl-_ 159 \$9F	63 \$3F	? 191 \$BF	95 \$5F	_ 223 \$DF	127 \$7F	□ 255 \$FF	_ = Ⓜ

(Delete)

