

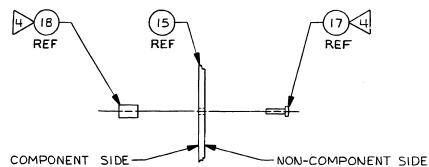
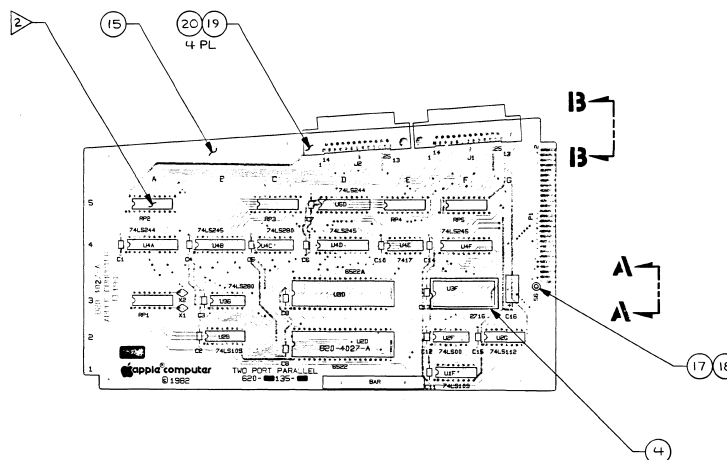
1. THE ASSY REV LEVEL MUST CORRESPOND WITH THE BILL OF MATERIAL REV LEVEL. MANUFACTURING MUST STAMP THE LATEST REV LEVEL IN THE APPROPRIATE LOCATION ON THE PCB AFTER ASSEMBLY OR REMARK.

2 THE 16 PIN R PACKS RP2-RP5 TO BE CENTERED ON 20 PIN PAD LAYOUT.  
REMAINING 4 HOLES CAN FILL WITH SOLDER.

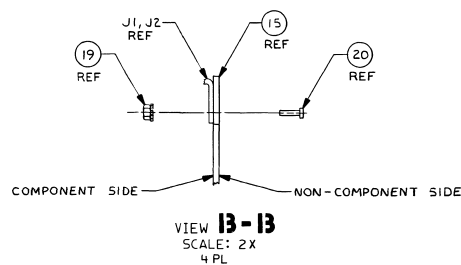
3. PCB ASSY MUST CONFORM TO APPLE WORKMANSHIP STD 060-0012.

4 APPLY "LOCTITE" THREADLOCKER #222 TO THREADS OF ITEMS 17 AND 18 BEFORE ASSY.

REV	ZONE	ECO #	REVISION	APPROVED
A	—	B17B	INITIAL RELEASE	—
B	3C	B25D	ITEM 20, 4PL WAS ITEM 17, 4PL	09/11/88
B	4D	B467	ADDED NOTE 4.	10/11/88



VIEW A-A  
SCALE: 2X



VIEW **B-B**  
SCALE: 2X  
4 PL




THIRD ANGLE PROJECTION  
DO NOT SCALE DRAWING

REFERENCE DOCUMENTATION:  
BILL OF MATERIAL 620-0135  
SCHEMATIC 050-4027

**PRODUCTION RELEASE**  
This version supersedes all previous versions.  
Please destroy all old copies.

**NOTICE OF PROPRIETARY PROPERTY**  
The information contained herein is the  
proprietary property of Apple Computer, Inc.  
The recipient agrees to the following:  
(1) To maintain this document in confidence  
(2) Not to reproduce or copy it  
(3) Not to release or publish it in whole or in part

ITEM	QTY	PART NUMBER	DESCRIPTION
TOLERANCES UNLESS OTHERWISE SPECIFIED: DIMENSIONS ARE IN INCHES ANGLES       X.X° DECIMALS   X.X DIMS       X.XX FRACTIONS   X.X/16 DECIMALS IN PARENTHESES ARE IN MILLIMETERS		DRAWN BY: <i>DAVID</i> DATE: <i>12/14/83</i> CHECKED BY: <i>T.S.M.</i> DATE: <i>1/83</i> APPROVED BY: <i>W.H.</i> DATE: <i>9/83</i> RELEASED BY: <i>J. Zelle</i> DATE: <i>9/83</i>	 TITLE: ASSEMBLY, PCB PARALLEL I/F LISA SIZE D DRAWING NUMBER 620-0135-B
MATERIAL:		SCALE FULL SHEET 1 OF 1	
NEXT ASSY	FINISH		