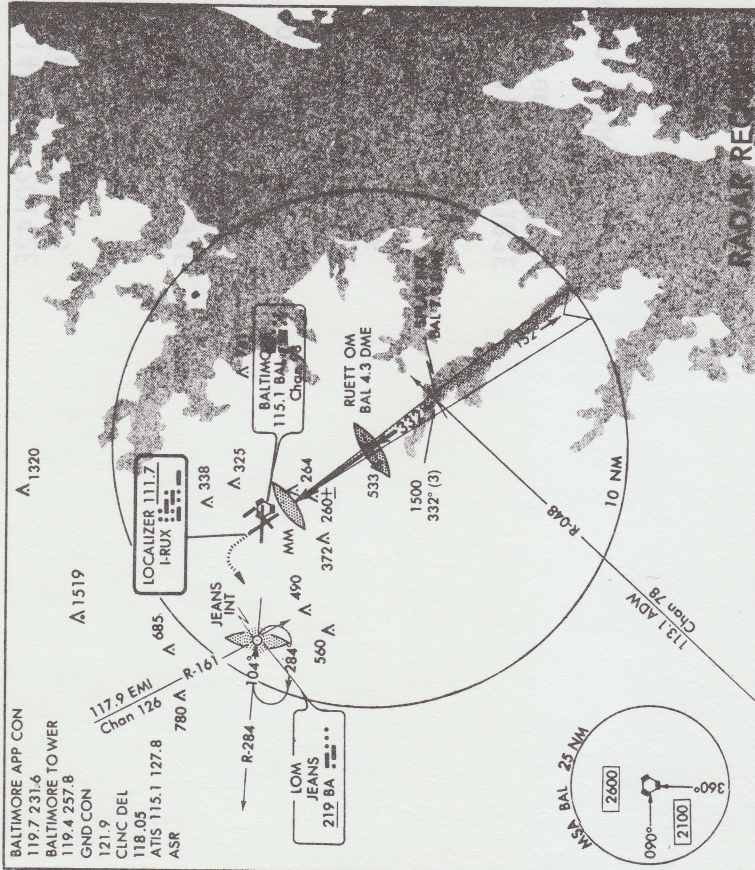


**ILS RWY 33L** BALTIMORE-WASHINGTON INTL (BWI) BALTIMORE, MARYLAND

AL-804 (FAA)

Amdt 3



**MISSED APPROACH**  
Climb to 600 then climbing left turn to 2000 via BAL R-284 to Jeans Int/LOM and hold.

**SPLAT INT**  
BAL 7.3 DME

**RUETT OM**  
BAL 4.3 DME

**1465**

CATEGORY	A	B	C	D
S-ILS 33L	520-1/2	378 (400-1/2)	200 (200-1/2)	570-3/4
S-LOC 33L	640-1	494 (500-1)	494 (500-1 1/2)	760-2
CIRCLING	640-1	494 (500-1)	494 (500-1 1/2)	614 (700-2)

GS 3.00° TCH 55

332° 4 NM from Ruett OM, BAL 4.3 DME

TOZ/CL Rwy 10  
REIL Rwy 4, 22, and 33R  
HIRL Rwy 10-28, 15R-33L and 4-22

FAF to MAP 4 NM

Knots	60	90	120	150	180
Min:Sec	4:00	2:40	2:00	1:36	1:20

FAF to MAP 4 NM

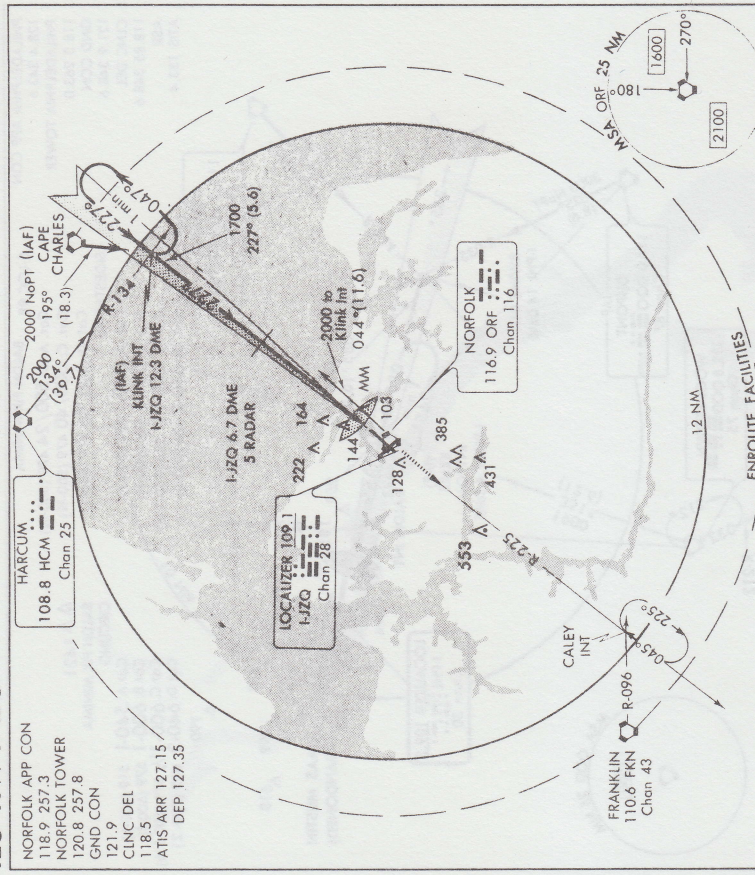
**ILS RWY 33L** BALTIMORE-WASHINGTON INTL (BWI) BALTIMORE, MARYLAND

39°10'N-76°40'W

**ILS RWY 23** NORFOLK INTERNATIONAL (ORF) NORFOLK, VIRGINIA

Amdt 4

AL-291 (FAA)



**MISSED APPROACH**  
Climb to 2000 via ORF VORTAC R-225 to Caley Int and hold.

**KLUNK INT**  
I-JZQ 12.3 DME

**One Minute Holding Pattern**

**1688**

**1700**

**1700**

**2000**

**2000**

**2000**

**GS 3.00° TCH 55**

CATEGORY	A	B	C	D
S-ILS 23	321-3/4	295 (300-3/4)	200	200
S-LOC 23	400-3/4	374 (400-3/4)	540-1 1/2	580-2
CIRCLING	460-1	480-1	540-1 1/2	553 (600-2)

DME or radar required.  
Inoperative table does not apply.  
S-LOC Cats. A, B, C, increase visibilities 1/4 mile, Cat D 1/2 mile, for inoperative MM.  
S-LOC Cat. D increase visibility 1/4 mile for inoperative MM.

Knots	60	90	120	150	180
Min:Sec	5:00	3:20	2:30	2:00	1:40

FAF to MAP 5 NM

**ILS RWY 23** NORFOLK INTERNATIONAL (ORF) NORFOLK, VIRGINIA

36° 54'N - 76° 12'W