

Apple Lisa Computer Technical Information

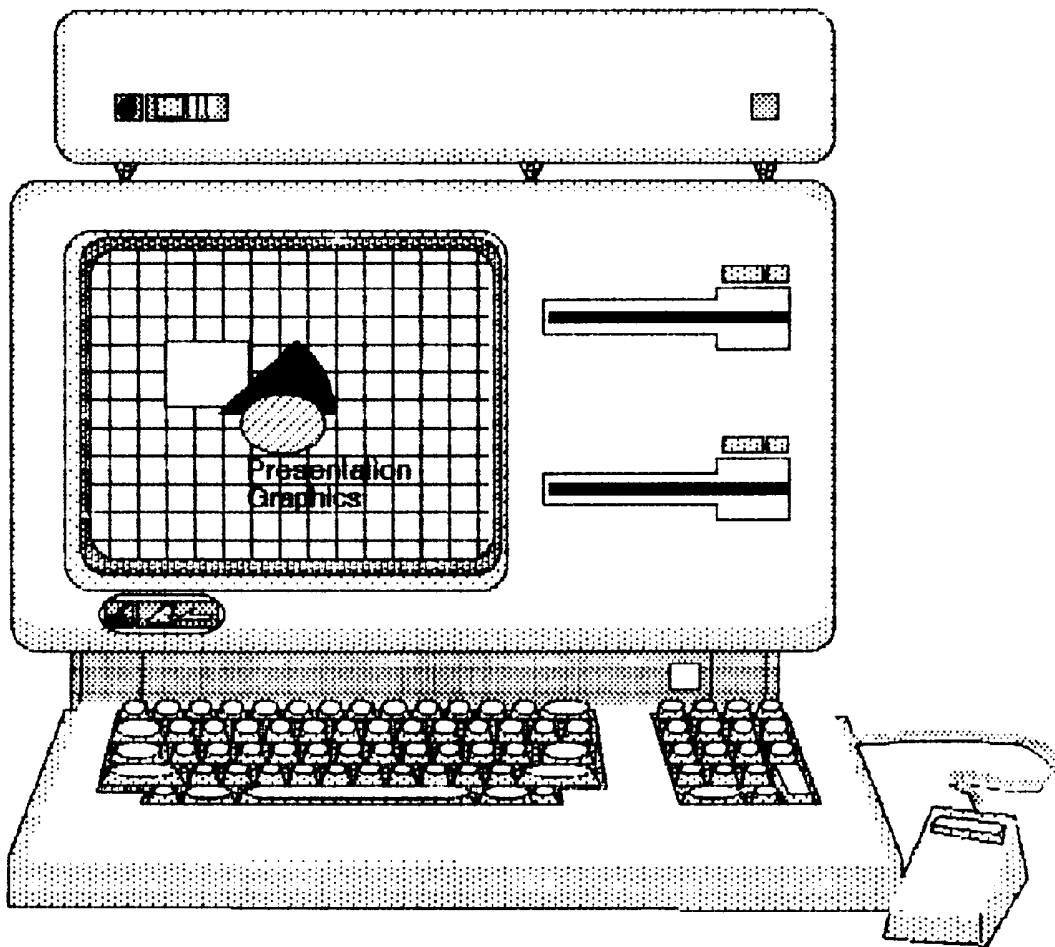


Apple Lisa Computer Schematics (From Apple Computer)

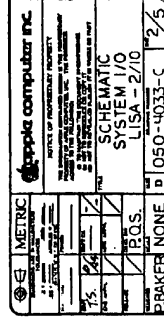
🍏 Apple Lisa Computer
Technical Information

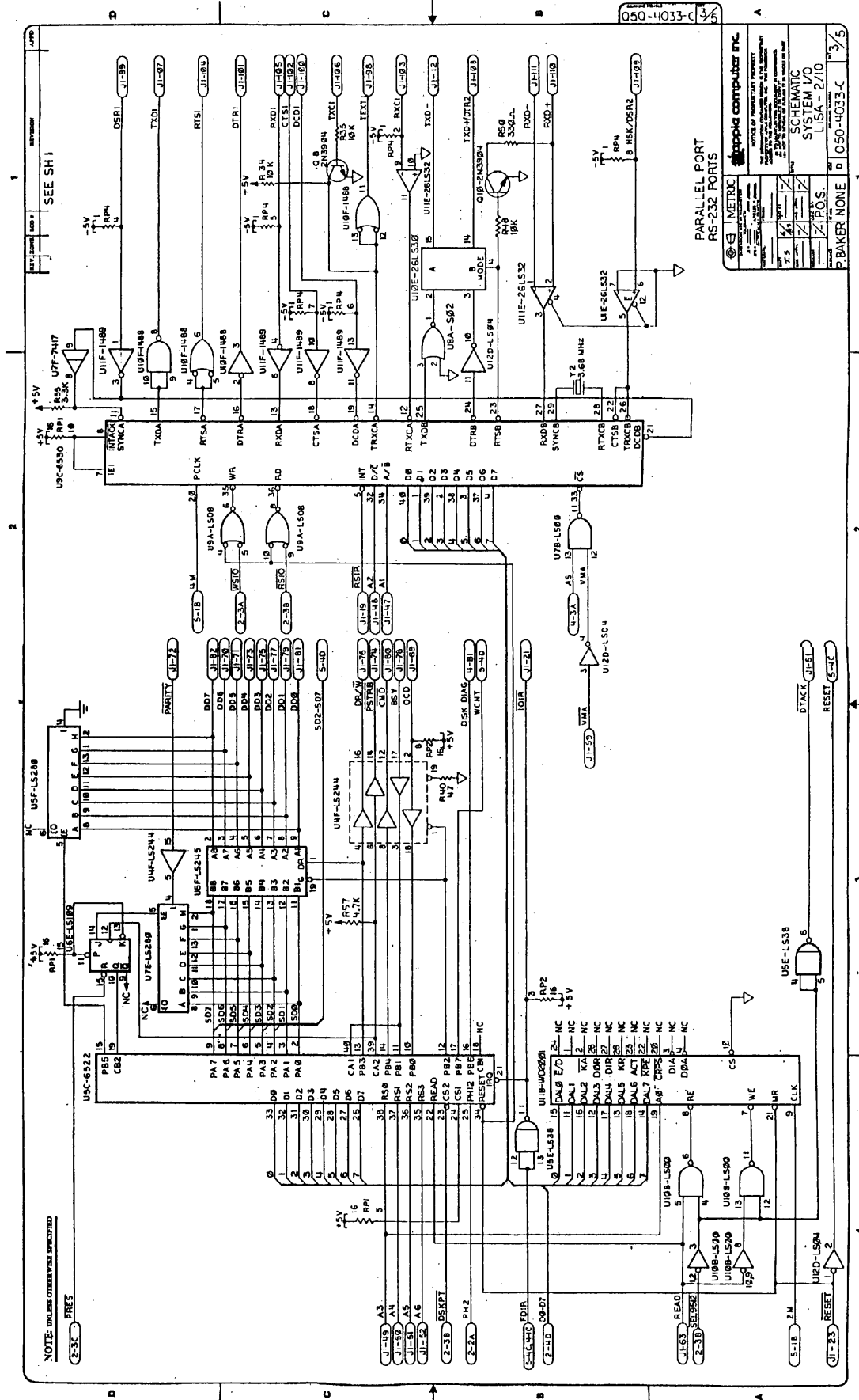


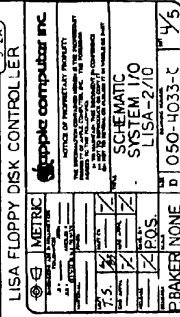
APPLE LISA COMPUTER SCHEMATICS

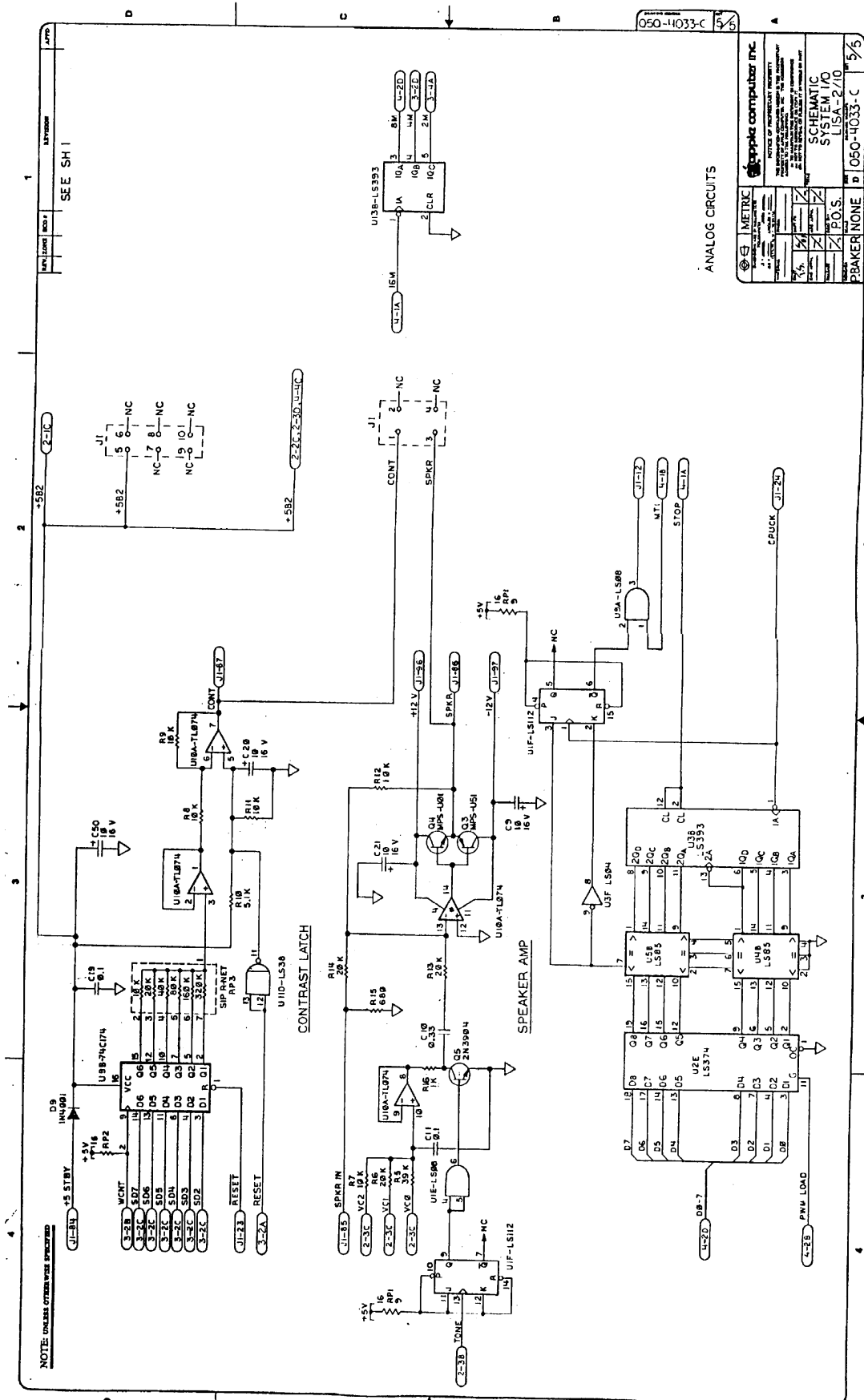








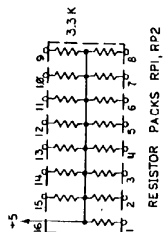
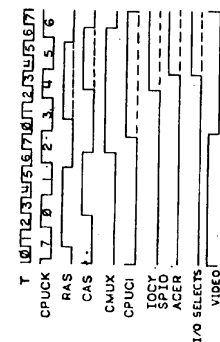




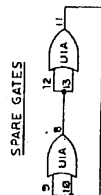
NOTE: UNLESS OTHERWISE SPECIFIED

1. ALL RESISTORS VALUE ARE IN OHMS
1/4 WATT $\pm 5\%$.

TIMING



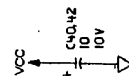
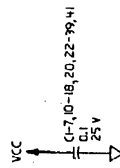
RESISTOR PACKS RPI, RP2



SPARE GATES



8057



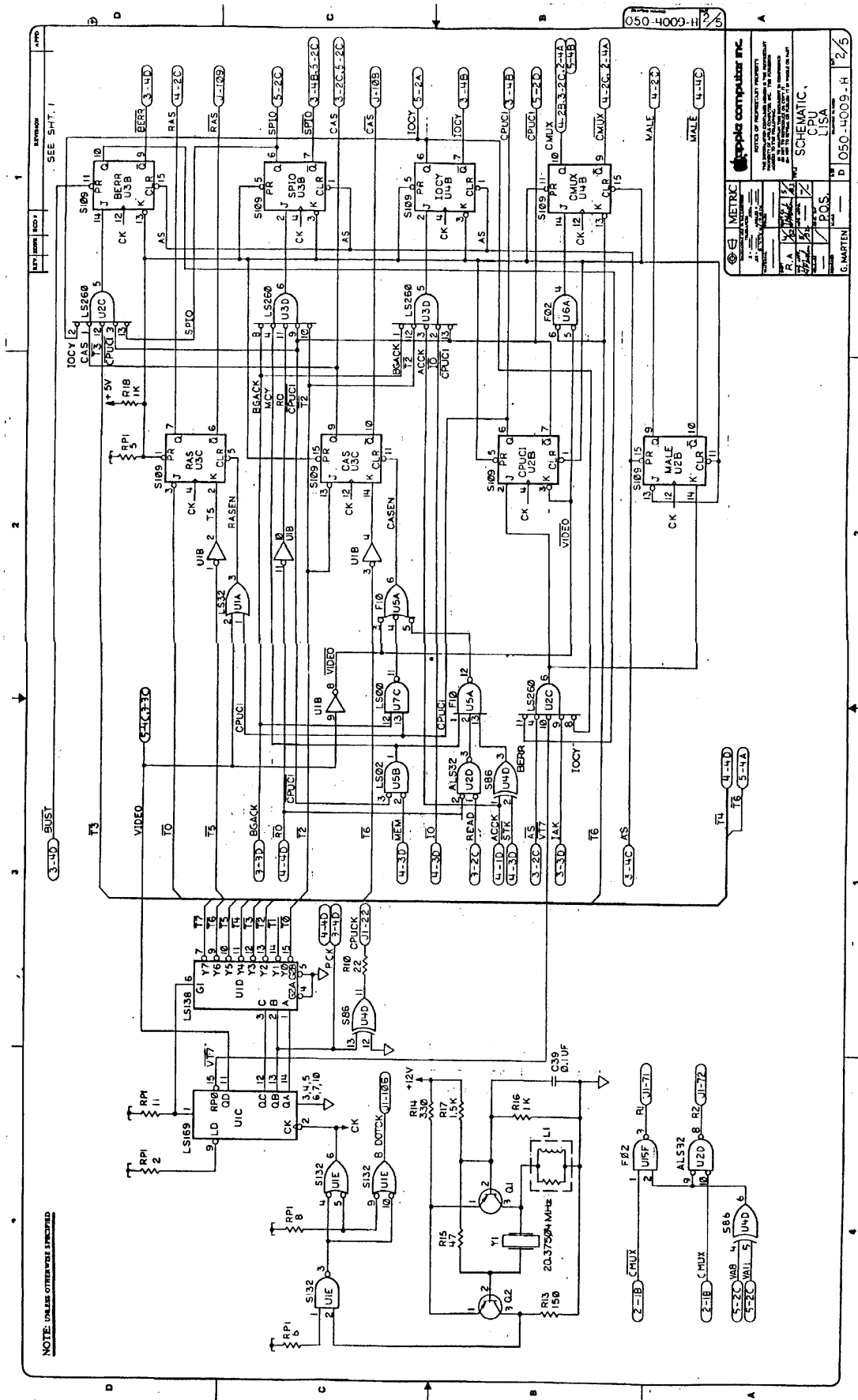
REFERENCE DESIGNATIONS	
DEVICE	LAST USED NOT USED
CA.	CRI
Q	Q2
J	J1
A	R19
C	C42
AP	RP2
SW	
L	L1
Y	Y1
DS	DS1

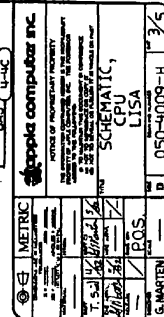
DEVICE	NAME	+SV/GNDRC
74LS00	U7C,6D,16F	14 7 3,15
74LS04	U1B	↑ 12,5
74LS08	U1A	5
74LS11	U10C	3
7417	U2E	3,5
74LS32	U1A	2,4
74LS32	U2D	2,4
74LS38	U7A	↑ 5
74S86	U1D	14 7 2,5
74S109	U3A,2B,3B 4B,3C,5D,3E	16 8 2,4,5
74S132	U1E	14 7 2,5
74S138	U1D	16 8 2
74LS139	U1F	↑ 4 5
74LS139	U1H	↑ 5
74LS153	U2F	3
74LS153	U6E,7E 8E,5F	4
74LS156	U4F	3
74LS166	U7F,8F	↑ 4 5
74S169	U1C	16 8 2
74LS244	U8C,10C,9E,2D,10,3	2
74LS245	U1A,10H,1E,5F,17F	20 10 3,4
74LS259	U4E	↑ 16 8 5
74LS260	U2C, U3D	14 7 2
74LS279	U5C	16 8 3
74F283	U8B,9A,10B	16 8 4
74LS373	U9D	20 10 4
74LS374	U9C,10C,7D	20 10 3,4
74LS393	U7B,5E,6F	14 7 5
74LS1002	U7A	14 7 2,5
68200	U7A	14,10,6,5,3
ROM SERIAL	U6C	20 10 5
74F19	U5A	14 7 2,3
74VHC16	U8A,9A,10B	18 9 4
ROM HI	U1D	28 14 3
ROM LO	U1D	28 14 3
555A	U1E	14 7 2

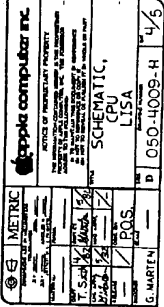
[illegible]

KEY	NAME	NO	EXT	DATE	TIME	REMARKS
A	BOFF					INITIAL RELEASE
B	BIRD					SHEET 1 ADDED COOL CUS; SHEET 2 ADDED CORRECTION TO SHEET 1 SHEET NAMES, WORKERS SIGNAL
C	BOB					SHEET 1 - 2 WAS WAS JUN 23 2 30 PM PCB WAS T3, T4 WAS T3, PIN 1 (U) WAS PIN 1, D, ADDED PIN 1 TO GND, ADDED PIN 1 TO GND
D	BOB					SHEET 2 - 2 WAS WAS NUMBERS 13 AND 14 TRACES ON USB SHEET 3 - 3H-0175 WAS 3H-0071
E	BOB					SHEET 2 - 2 WAS PIN 3 WAS CONNECTED TO USB PIN 10 IS NOW USB PIN 10 REFERENCE PIN 10 REF FROM USB PIN 2 SHEET 3 WAS MADE SHEET 3 WAS CORRECTION CORRECTIONS
F	BOB					5H3-CB WAS 1.0
G	BOB					5H1 - R14 WAS R17, ADDED R51 3H4 - ADDED R18 5H4-015 PIN 3 WAS ADDED 78 ADDED 78

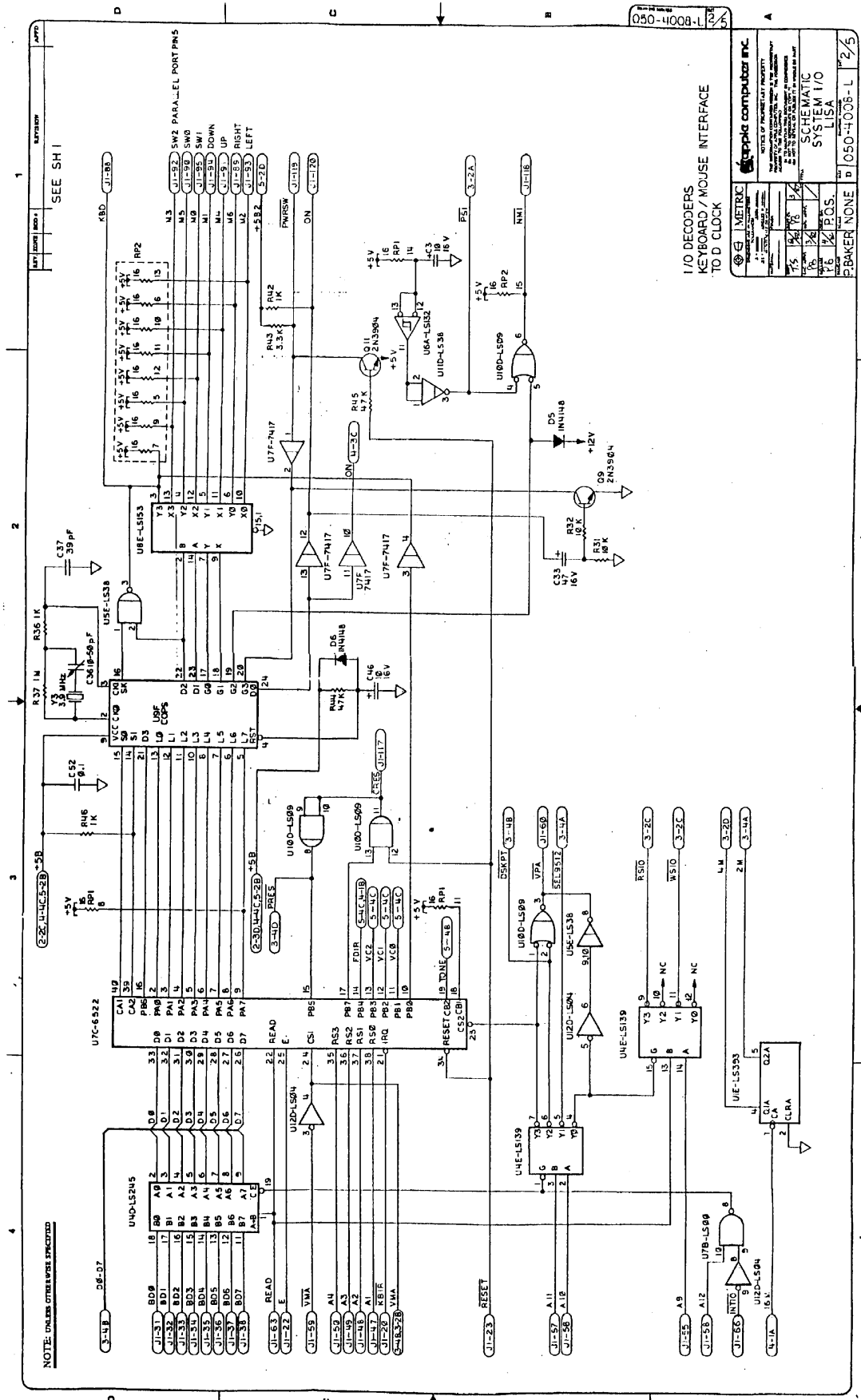
[illegible]

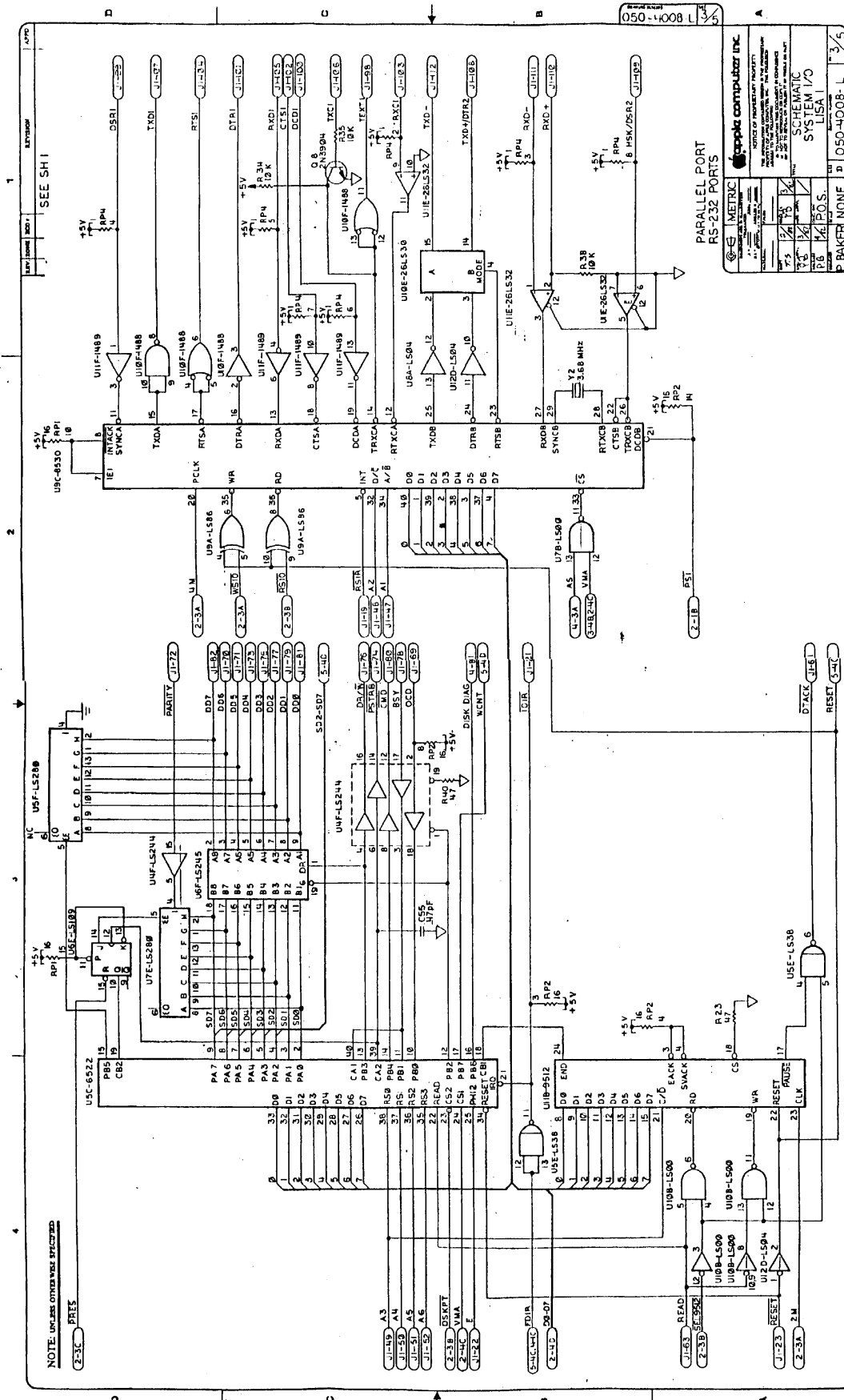




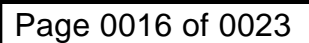


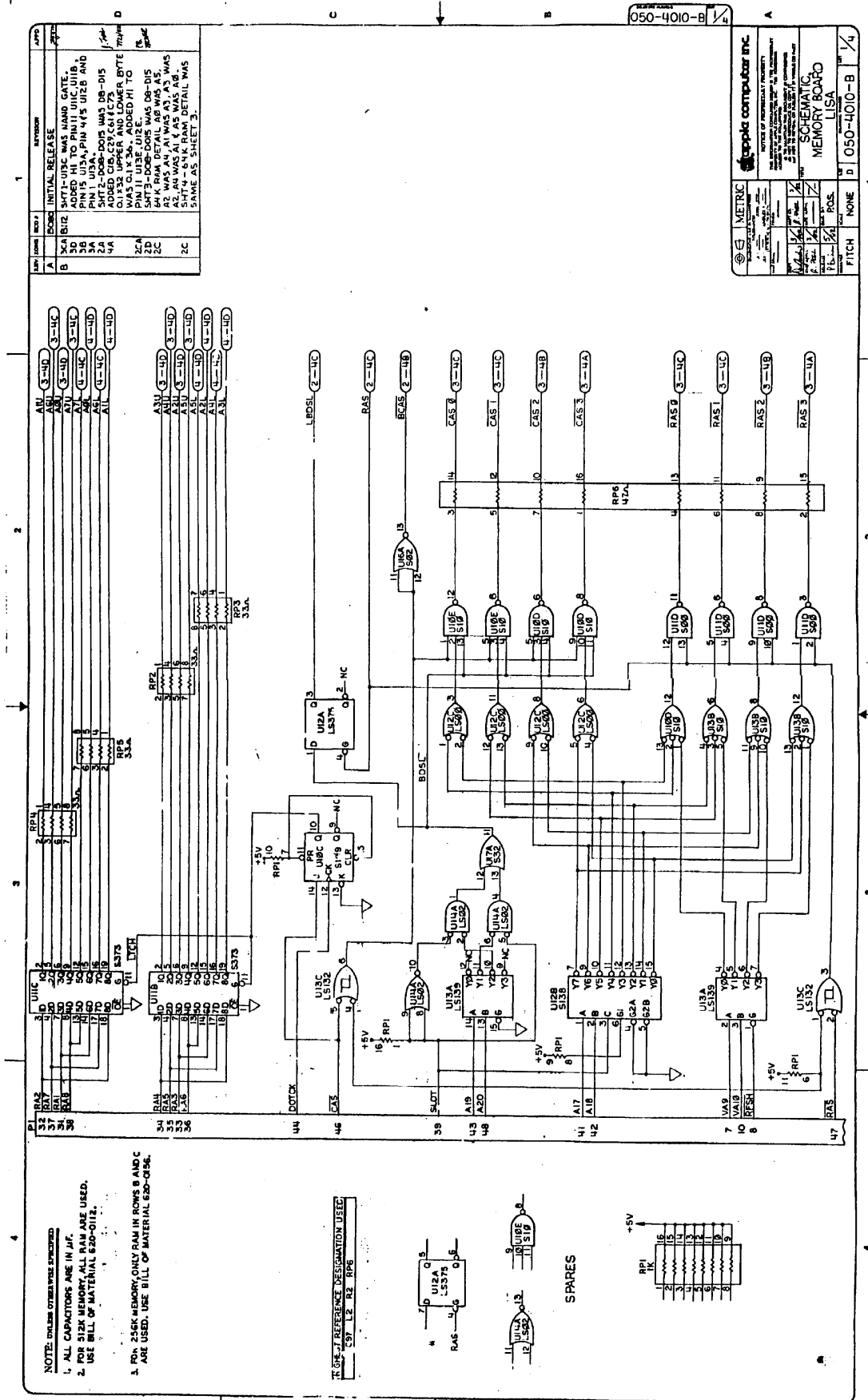


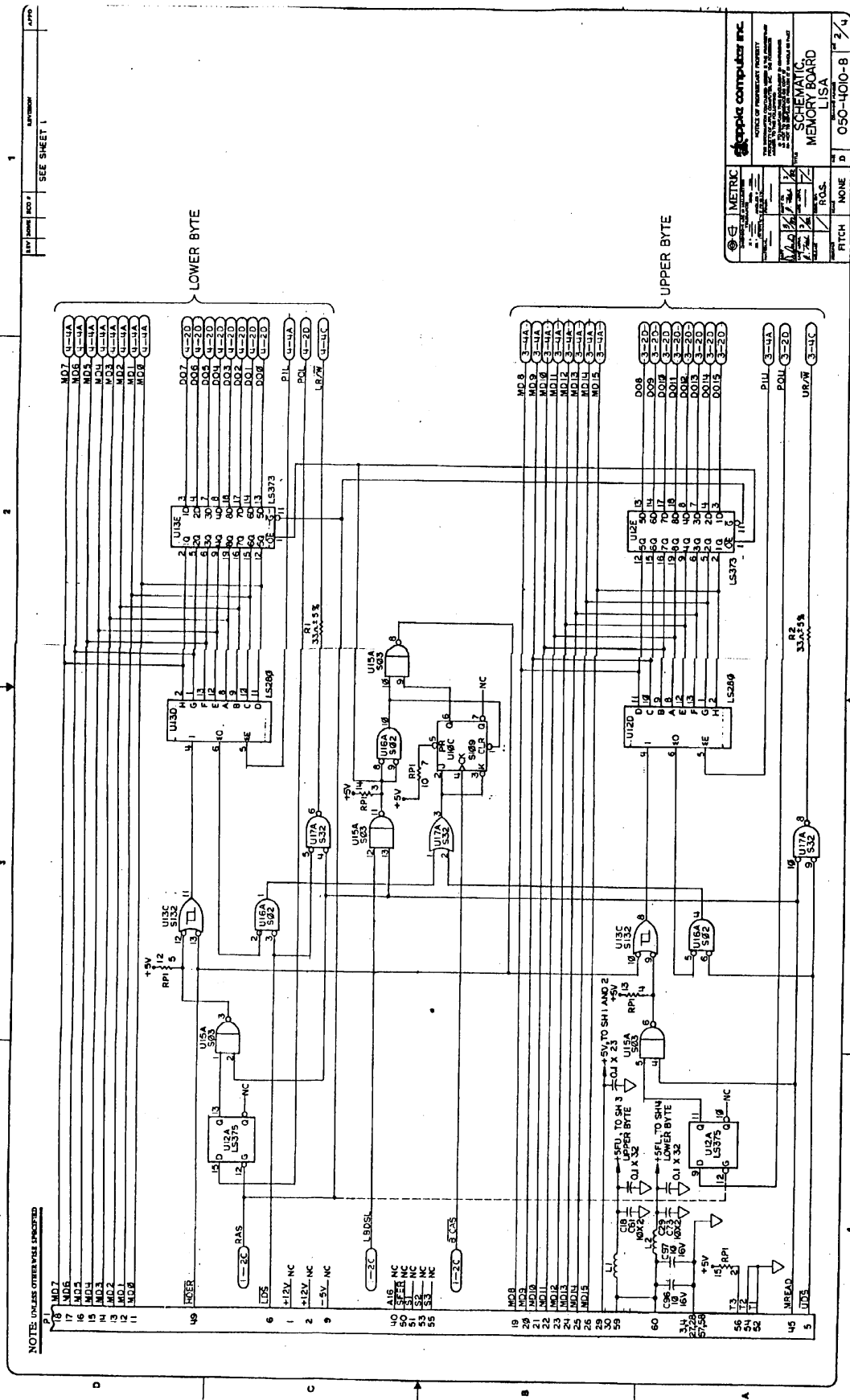







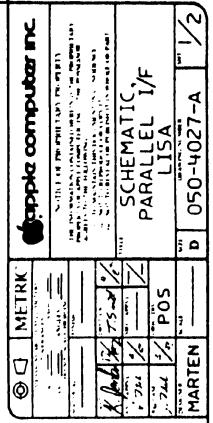




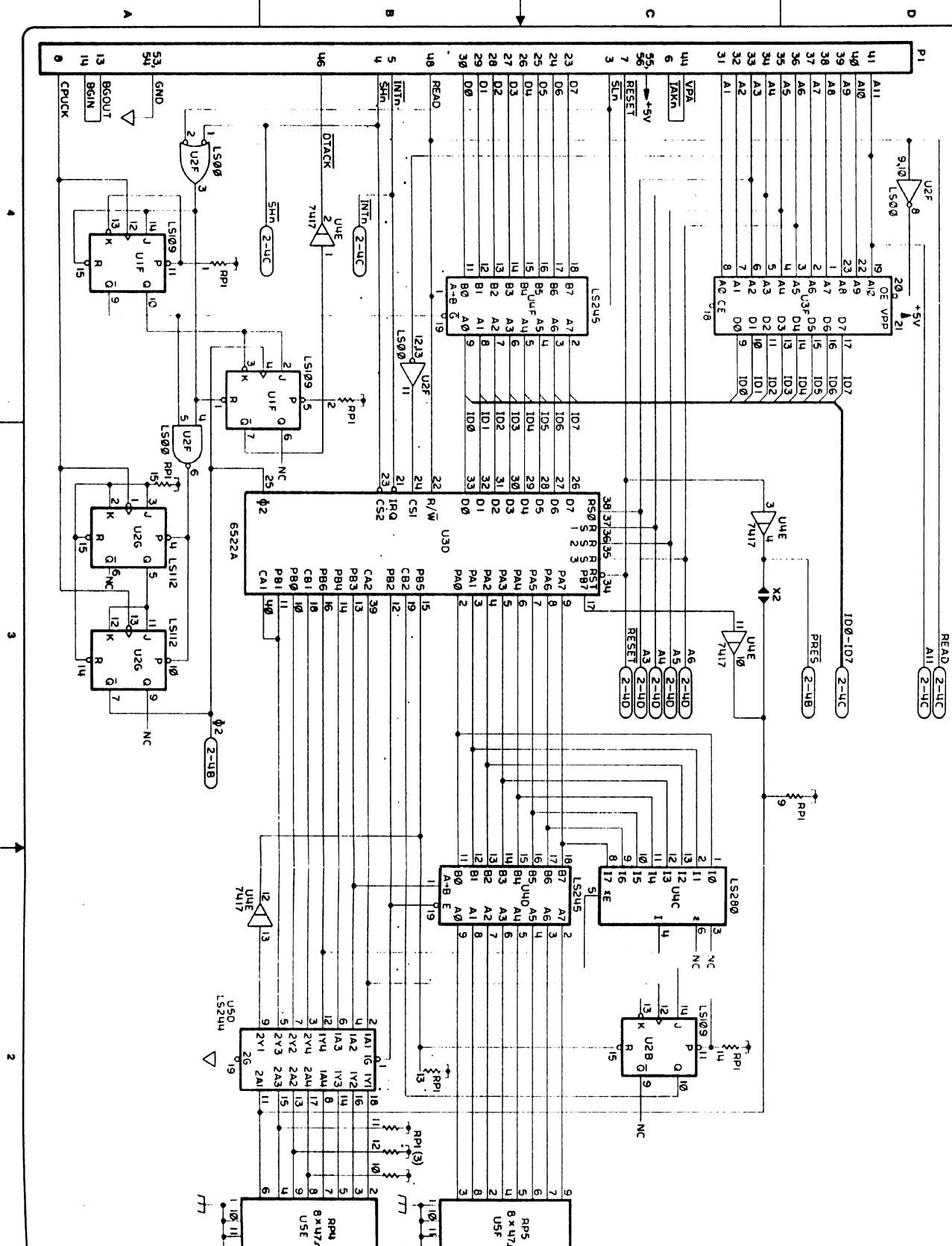


 METRIC MILLIMETER





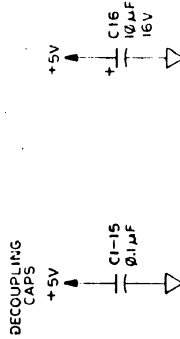
1. P1 IS COMPATIBLE IN ALL EXPANSION SLOTS.



REV	ZONE	ECO	REVISION	APPD
1			SEE SH 1	

REF	DESIG	DEVICE	+5V	GND
			PIN #	PIN #
U1F,2B	LS109	16	8	
U20,30	6522A	20	1	
U2F	LS00	14	7	
U2G	LS112	16	9	
U3B,4C	LS280	14	7	
U3F	2716	24	12	
U4A,50	LS244	20	10	
U4B,40JF	LS245	20	10	
U4E	7417	14	7	

REFERENCE DESIGNATIONS	
LAST USED	NOT USED
RP1	RP5
C	C16
J	J2
X	X2
P	P1



apple computer inc.

SCHEMATIC
PARALLEL I/F
LISA

050-4027-A 2/2

MARTEN

POS

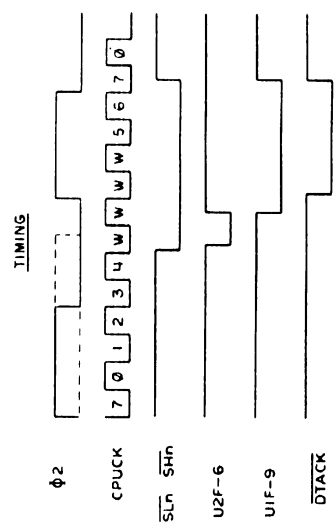
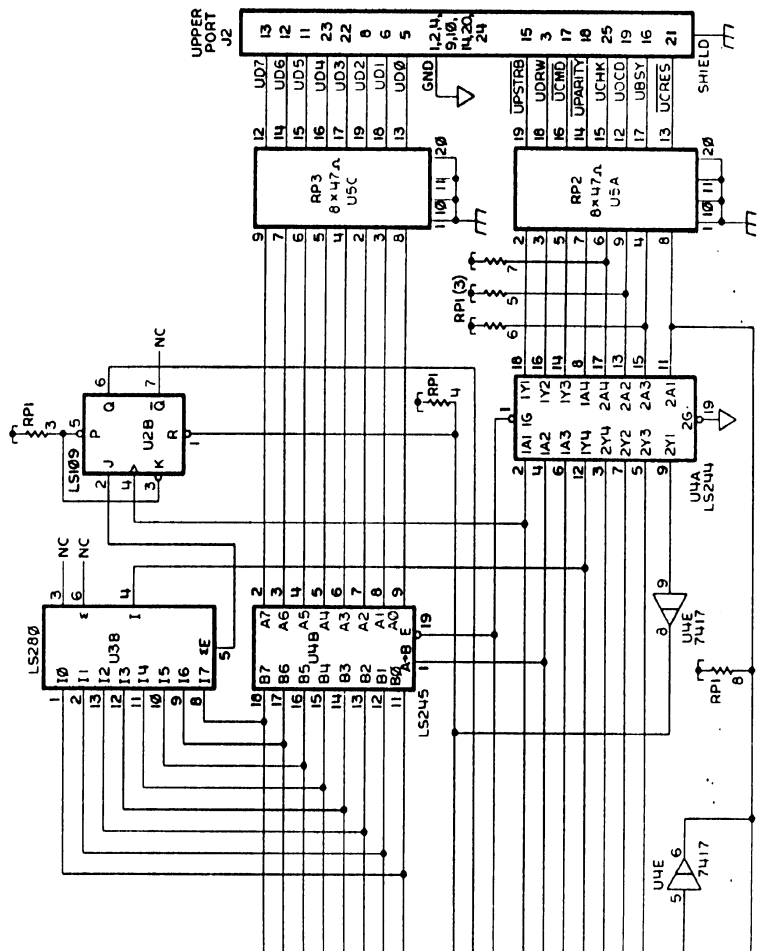
DATE

BY

CHKD

APPD

050-4027-A 2/2



SEE SH 1

